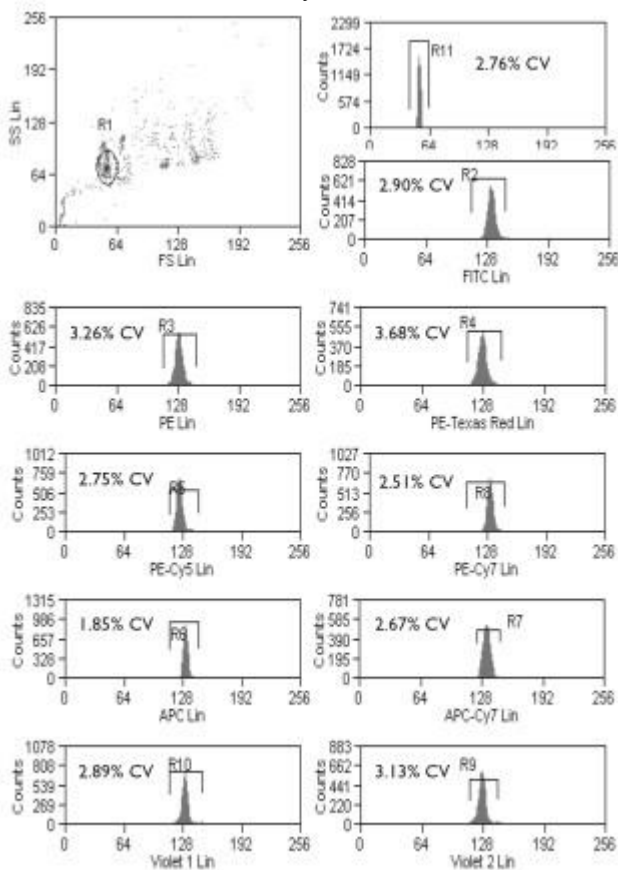


### ACME Rainbow Alignment Particles

- Consists of a prediluted, single peak for optical alignment of any flow cytometer in any channel
- Contains a single peak with very small fluorescence and size CV.
- Fluorescent in UV, FITC, PE, PE-TR, PE-Cy5, PE-Cy7, APC, APC-Cy7, and IR channels
- Measures the coefficients of variation (CVs), peak channels, and histogram distribution of flow cytometers.

Particle Type and Surface	Size, $\mu\text{m}$	Catalog No.	Unit
Rainbow Fluorescent Alignment Particles, 1.2x10 <sup>6</sup> /mL	3.5-3.9	RA035-5	5 mL

Figure 1 Histograms of the Ultra Rainbow Fluorescent Particles (Cat.No.FA3-5, Lot No. AA01) on a Beckman Coulter Cyan™ ADP.



### ACME Fluorescent Alignment Particles

- Consists of a single peak for optical alignment of any flow cytometer
- Contains a single peak with very small fluorescence and size CV.
- Fluorescent in FITC, PE, PE-TR, and PE-Cy5 channels
- Measures the coefficients of variation (CVs), peak channels, and histogram distribution of flow cytometers.

Particle Type and Surface	Size, $\mu\text{m}$	Catalog No.	Unit
Fluorescent Alignment Particles, 108/mL	3.0-3.4	FA3-5	5 mL

Figure 2 Histograms of the Ultra Rainbow Fluorescent Particles (Cat.No.FA3-5, Lot No. AA01) on a Beckman Coulter Cyan™ ADP.

